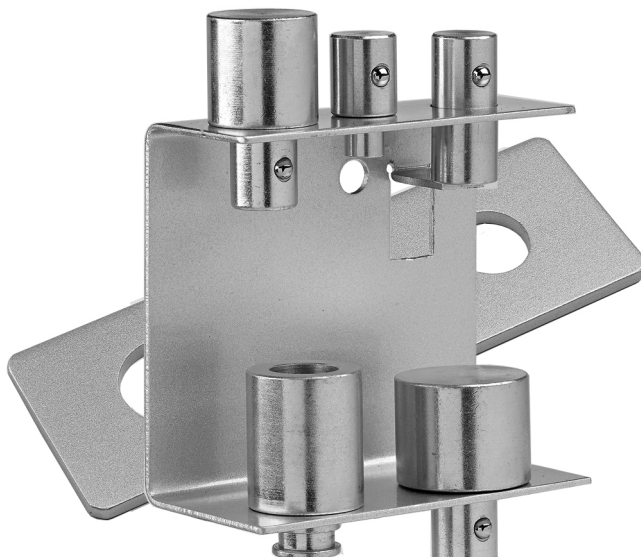


# ClamPro®

## STRONG-ARM



**WARNING:** Read these instructions before using the product

## 7PC ADAPTOR KIT FOR CSA12F & CSA10BB HYDRAULIC PRESSES

PART NO: 7615060

### USER INSTRUCTIONS



GC0913

---

## INTRODUCTION

---

Thank you for purchasing this CLARKE Adaptor Kit.

Before attempting to use this product, it is essential that you read this manual thoroughly and carefully follow all instructions given. In doing so you will ensure the safety of yourself and that of others around you, and you can also look forward to the product giving you long and satisfactory service.

---

## GUARANTEE

---

This CLARKE product is guaranteed against faulty manufacture for a period of 12 months from the date of purchase. Please keep your receipt as proof of purchase.

This guarantee is invalid if the product is found to have been abused or tampered with in any way, or not used for the purpose for which it was intended.

Faulty goods should be returned to their place of purchase, no product can be returned to us without prior permission. This guarantee does not effect your statutory rights.

---

## SAFETY PRECAUTIONS

---

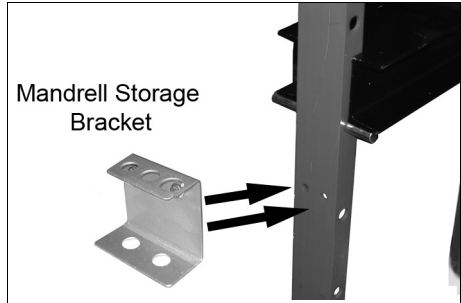
- Before use, always ensure the workpiece is firmly secure and stable.
- Do not allow any person who is inexperienced in the use of hydraulic presses, to use the press unless they are under direct supervision.
- Do not allow anyone to work directly in front of the press when it is in use.
- When using accessories such as arbor plates, be certain they are centered below the ram and are in full contact with the bed.
- Parts being pressed may splinter, shatter, or be ejected from the press. Due to varied applications, it is your responsibility to always use adequate guards, wear eye protection and protective clothing when operating this press.
- Keep hands and fingers away from parts that may pinch and shift.
- Always apply the load under the centre of the ram. Offset loads can damage the ram or ram mount and may cause the workpiece to eject.
- Failure to heed these warnings may result in damage to the equipment or failure resulting in damage to property or personal injury.
- Do not exceed the rated capacity of the press.

## CONTENTS

The kit includes 15mm, 25mm , 40mm and 50mm mandrels together with a mandrel adaptor, pressing plate and a mandrel storage bracket.

## MOUNTING THE BRACKET

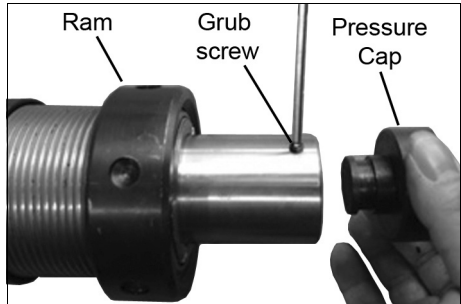
Bolt the mandrel storage bracket to the side of the press frame as shown.



## FITTING THE MANDRELS

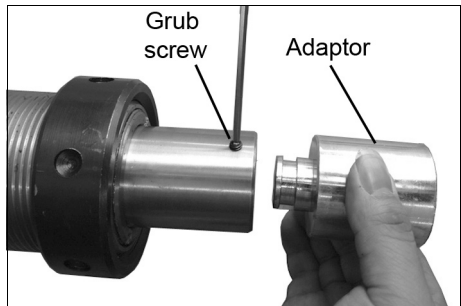
Any of the mandrels provided may be connected to the end of the ram using the adaptor supplied.

Alternatively, the basic ram pressure cap supplied with the press can be fitted as shown. Secure the pressure cap by tightening the grub screw with a suitable hexagonal key.



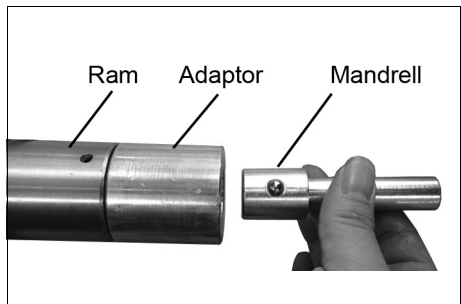
If one of the mandrels is required, the adaptor must be fitted instead of the pressure cap. Secure the adaptor by tightening the grub screw with a hexagonal key.

Select your mandrel depending upon the size of the workpiece bearing surface.



The mandrel can then be pushed into the adaptor where the built-in spring clip will hold it in place.

Store the mandrels in their positions on the mounting bracket when not in use.



# A SELECTION FROM THE VAST RANGE OF

# Clarke®

## QUALITY PRODUCTS

### AIR COMPRESSORS

From DIY to industrial. Plus air tools, spray guns and accessories.

### GENERATORS

Prime duty or emergency standby for business, home and leisure.

### POWER WASHERS

Hot and cold, electric and engine driven - we have what you need

### WELDERS

Mig, Arc, Tig and Spot. From DIY to auto/industrial.

### METALWORKING

Drills, grinders and saws for DIY and professional use.

### WOODWORKING

Saws, sanders, lathes, mortisers and dust extraction.

### HYDRAULICS

Cranes, body repair kits, transmission jacks for all types of workshop use.

### WATER PUMPS

Submersible, electric and engine driven for DIY, agriculture and industry.

### POWER TOOLS

Angle grinders, cordless drill sets, saws and sanders.

### STARTERS/CHARGERS

All sizes for car and commercial use.



**PARTS & SERVICE: 020 8988 7400**

**E-mail: [Parts@clarkeinternational.com](mailto:Parts@clarkeinternational.com) or [Service@clarkeinternational.com](mailto:Service@clarkeinternational.com)**

**SALES: UK 01992 565333 or Export 00 44 (0)1992 565335**

**Clarke® INTERNATIONAL** Hemnall Street, Epping, Essex CM16 4LG  
[www.clarkeinternational.com](http://www.clarkeinternational.com)